

Planar Lightwave Circuit Splitter (PLCS)

Agilecom's single-mode Planar Lightwave Circuit Splitter (PLCS) are developed based on unique silica glass waveguide process with reliable precision aligned fiber pigtail in a miniature package, it provides a low cost light distribution solution with small form factor and high reliability. The PLCS devices have high performance in terms of low insertion loss, low PDL, high return loss and excellent uniformity over a wide wavelength range from 1260nm to 1620nm and working in temperature from -40°C to +85°C. The PLCS devices have standard configurations of 1x4, 1x8, 1x16 and 1x32 configurations, as well as customized structures of 2X8, 2x16, 2x32 and 2x64.



Key Features

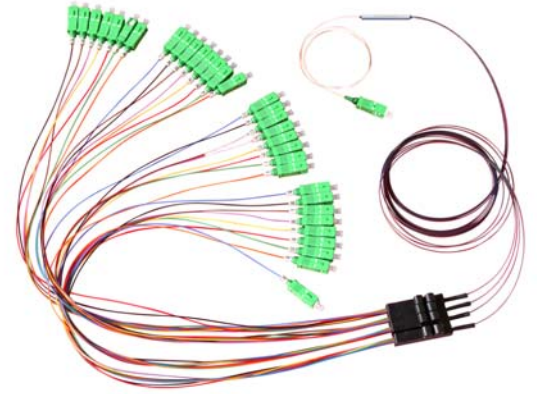
- Compact design
- Low insertion loss and low PDL
- High reliability
- High channel counts
- Wide wavelength range
- Large operating temperature range
- Customized packaging and configuration

Applications

- FTTx Systems
- LAN, WAN and Metro Networks
- Analog/Digital Passive Optical Networks
- CATV Networks
- Other applications in fiberoptic systems

Compliance

- Telcordia GR-1209-CORE
- Telcordia GR-1221-CORE



1xN PLC Specifications

Port Configuration		1x2	1x4	1x8	1x16	1x32	1x64
Fiber Type		SMF-28e or customer specified					
Operating Wavelength (nm)		1260~1650					
Insertion Loss (dB)	Typical	3.7	6.8	10.0	13.0	16.0	19.5
	Max	4.0	7.2	10.5	13.5	16.9	21.0
Loss Uniformity (dB)	Max	0.4	0.6	0.8	1.2	1.5	2.5
Return Loss (dB)	Min	50	50	50	50	50	50
Polarization Dependent Loss(dB)	Max	0.2	0.2	0.3	0.3	0.3	0.4
Directivity (dB)	Min	55	55	55	55	55	55
Wavelength Dependent Loss(dB)	Max	0.3	0.3	0.3	0.5	0.5	0.8
Temperature Dependent Loss (-40~85 °C) (dB)	Max	0.5	0.5	0.5	0.8	0.8	1.0
Operating Temperature (°C)		-40~85					
Storage Temperature (°C)		-40~85					
Packaging Size (mm)		40x4x4	40x4x4	40x4x4	40x4x4	50x7x4	60x12x4

Notes : 1. Specifications without fiber connectors. 2. Room temperature test .

